

METROPOLITAN WASHINGTON AIRPORTS AUTHORITY



Dulles Corridor Advisory Committee

Dulles Corridor Metrorail Project

November 18, 2010



Construction Marching Forward Phase 1 from I-66 to Reston

- ◆ Construction of the Dulles Corridor Metrorail Project is underway along the 11.7-mile corridor, from East Falls Church to Reston
- ◆ All 5 Phase 1 stations are now under construction
- ◆ Outbound Tunnel complete, Inbound Tunnel complete December 2010

DESIGN 95 PERCENT COMPLETE
CONSTRUCTION 22 PERCENT COMPLETE



METROPOLITAN WASHINGTON AIRPORTS AUTHORITY



Dulles Connector Road & I-66 Interchange



METROPOLITAN WASHINGTON AIRPORTS AUTHORITY



Straddle Bent #5 Over I-66 Westbound



METROPOLITAN WASHINGTON AIRPORTS AUTHORITY



I-66 and Dulles Connector Road



METROPOLITAN WASHINGTON AIRPORTS AUTHORITY



Dulles Connector Road



METROPOLITAN WASHINGTON AIRPORTS AUTHORITY



Sunrise Along Rt. 123



METROPOLITAN WASHINGTON AIRPORTS AUTHORITY



Rail Piers Between Westpark Bridge and I-495



Laydown Area 10 Precast Facility



METROPOLITAN WASHINGTON AIRPORTS AUTHORITY



Concrete Segments



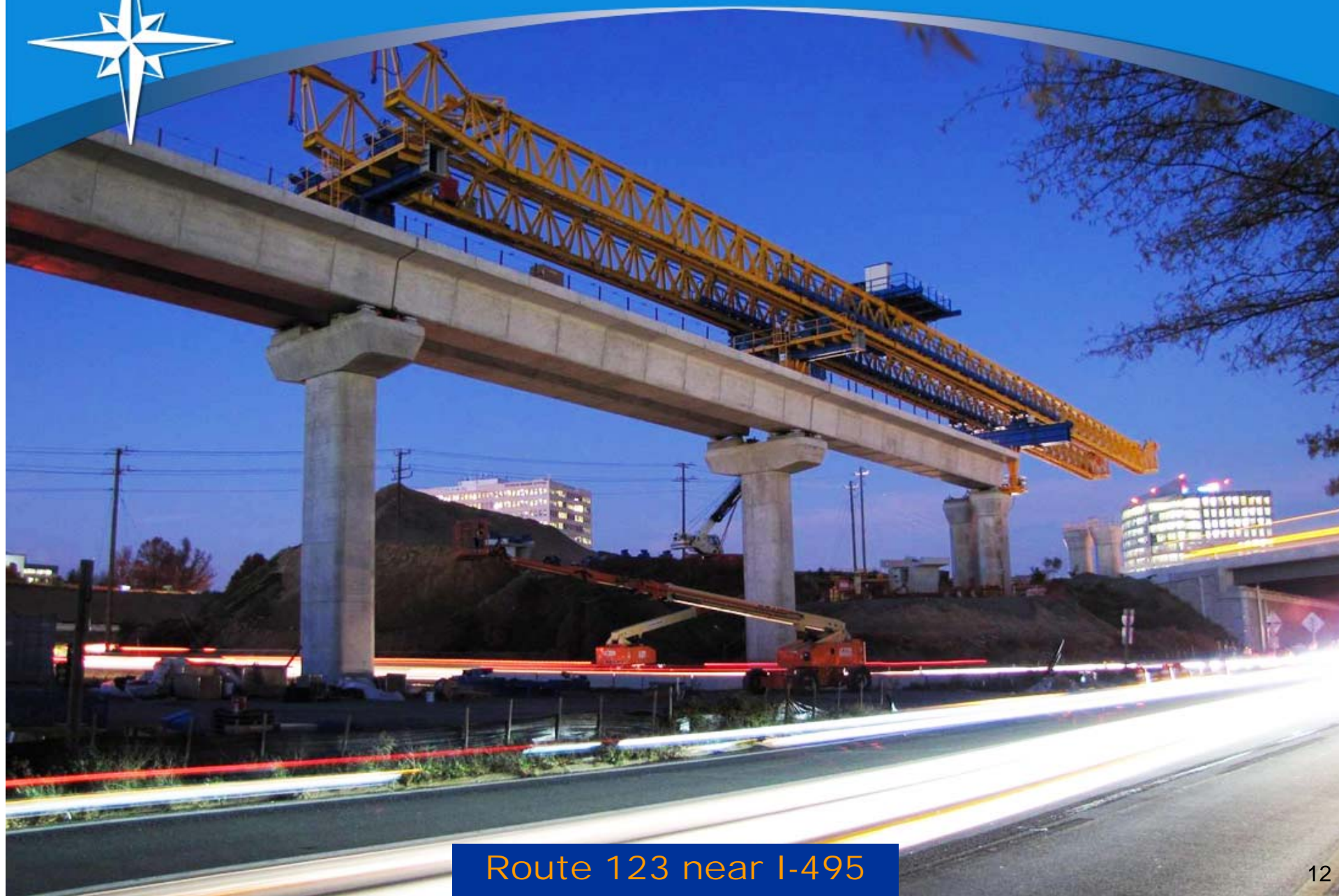
METROPOLITAN WASHINGTON AIRPORTS AUTHORITY



Concrete segments being erected for spans
on Route 123 near Northrop Grumman



METROPOLITAN WASHINGTON AIRPORTS AUTHORITY



Route 123 near I-495



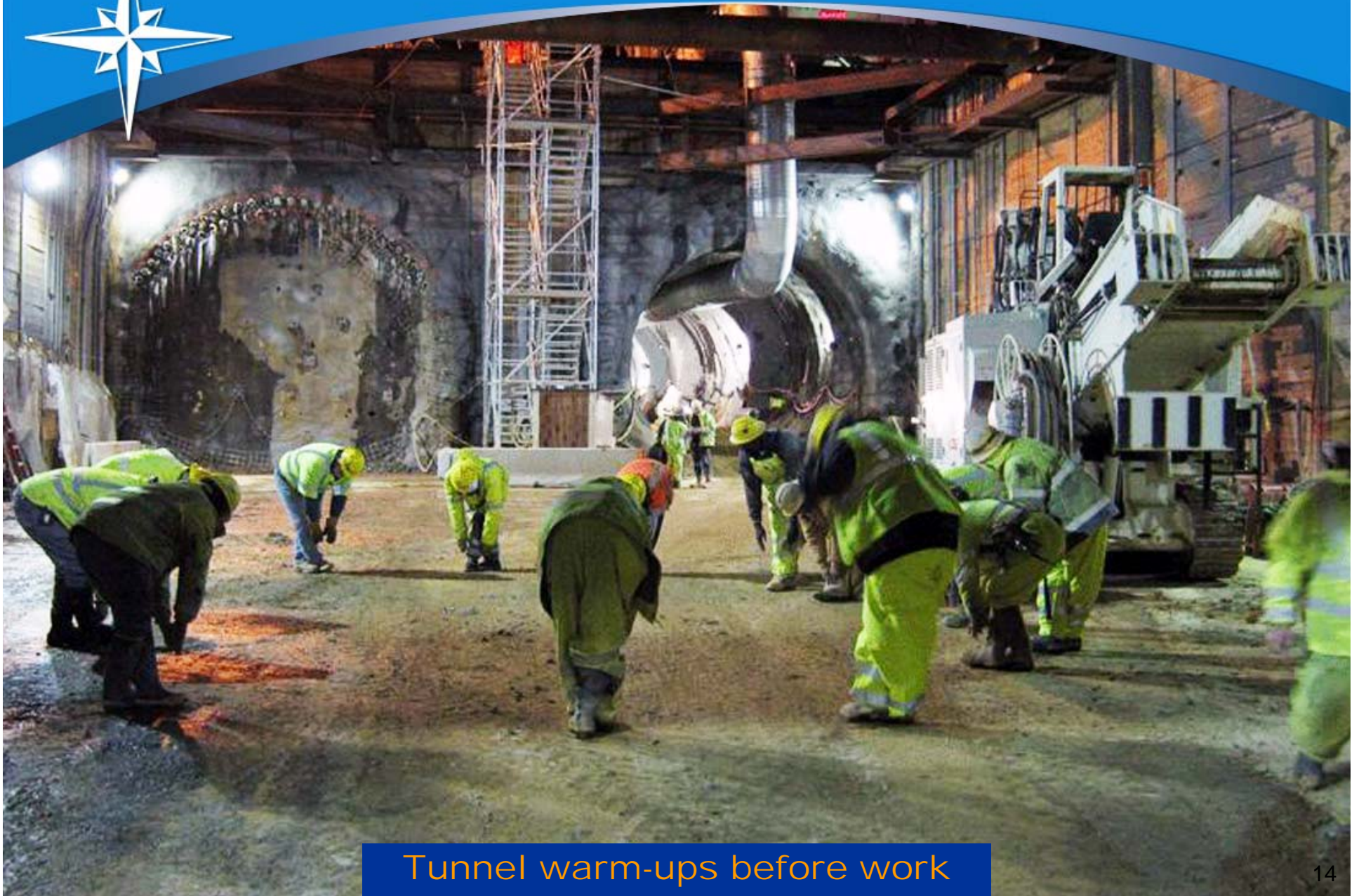
METROPOLITAN WASHINGTON AIRPORTS AUTHORITY



Truss overlooking the Beltway



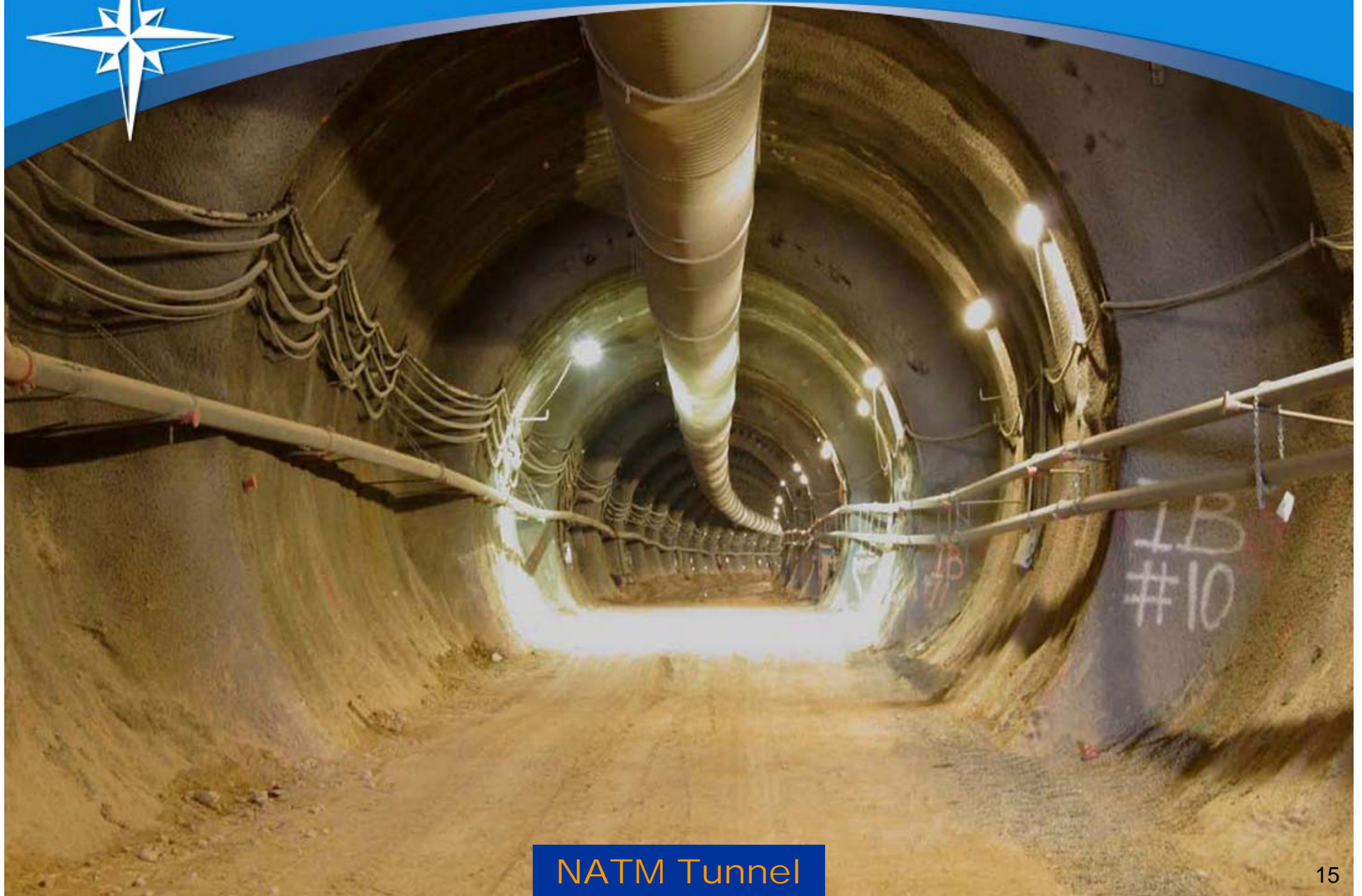
METROPOLITAN WASHINGTON AIRPORTS AUTHORITY



Tunnel warm-ups before work



METROPOLITAN WASHINGTON AIRPORTS AUTHORITY



NATM Tunnel



METROPOLITAN WASHINGTON AIRPORTS AUTHORITY



Outbound NATM Tunnel Excavation Complete



METROPOLITAN WASHINGTON AIRPORTS AUTHORITY



Outbound NATM Tunnel Breakthrough



METROPOLITAN WASHINGTON AIRPORTS AUTHORITY



Route 7 Construction



METROPOLITAN WASHINGTON AIRPORTS AUTHORITY



Looking West Over W&OD Trail



METROPOLITAN WASHINGTON AIRPORTS AUTHORITY



Wiehle Ave. Station



Phase 1 Schedule

Final Design Complete:	2011
Utility Work Complete:	2011
Construction:	2009 – 2013
Railcars Delivered:	2013 – 2014





Phase 1 Construction Contract Status

October 2010

	BUDGET AUTHORIZATION	FORECAST AMOUNT	AMOUNT PAID TO DATE
DESIGN BUILD:	\$1,932,739,867	\$1,858,431,677	\$531,252,425
UTILITY RELOCATION:	\$149,109,574	\$165,468,433	\$133,288,224
RIGHT OF WAY:	\$96,265,139	\$87,695,141	\$64,296,108
WMATA:	\$310,228,975	\$293,007,811	\$21,851,655
PRELIMINARY ENGINEERING:	\$100,968,646	\$100,730,999	\$100,730,999
PROJECT MANAGEMENT:	\$166,383,080	\$159,086,546	\$79,396,532
TOTAL:	\$2,755,695,281	\$2,664,420,607	\$930,815,943



Phase 2 Schedule

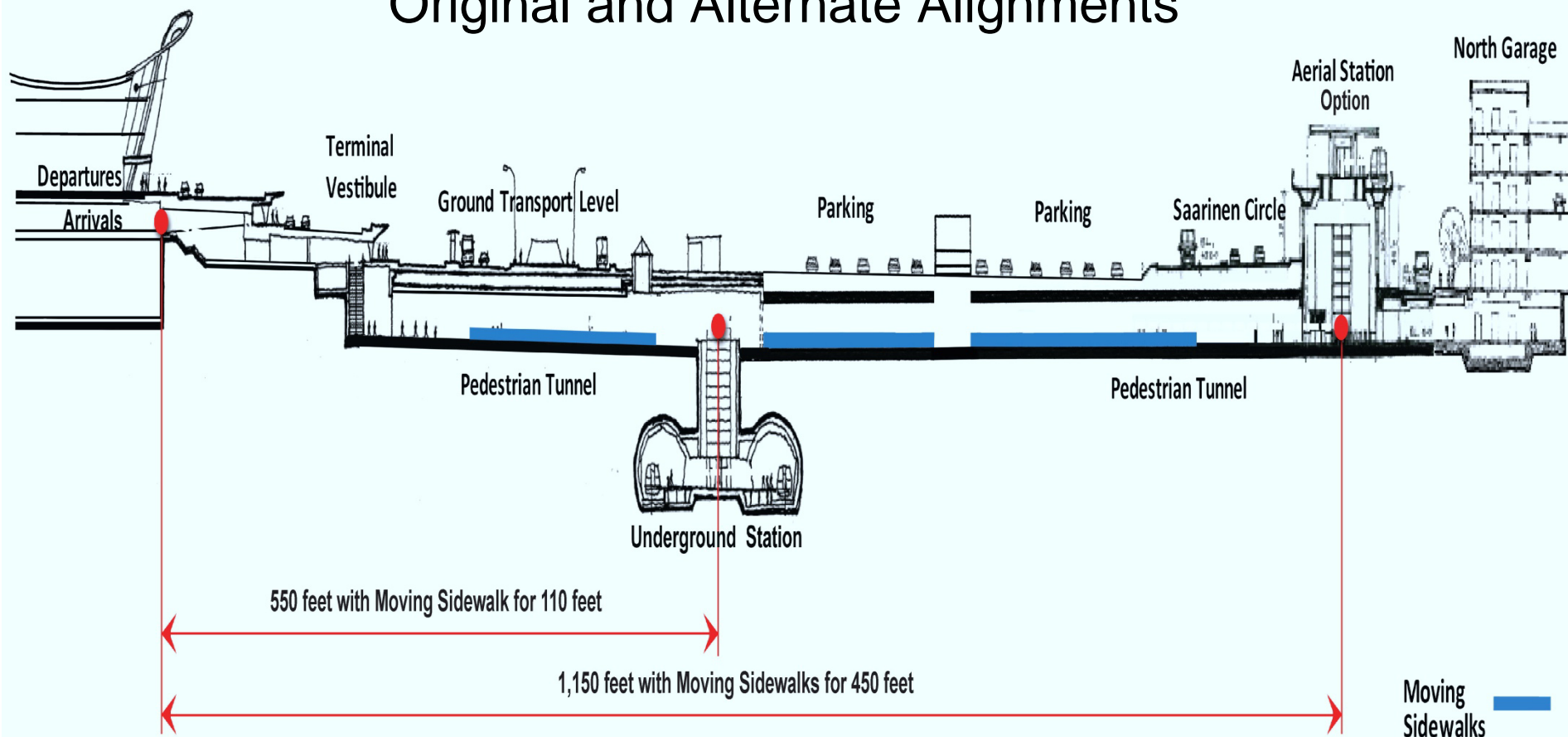
NTP: Preliminary Engineering	December 2009
PE Planned Completion <i>Alternative alignments being evaluated</i>	March 2011
Design Build NTP	Late 2011
Design Build Completion	December 2016



METROPOLITAN WASHINGTON AIRPORTS AUTHORITY

Dulles International Airport Station

Original and Alternate Alignments

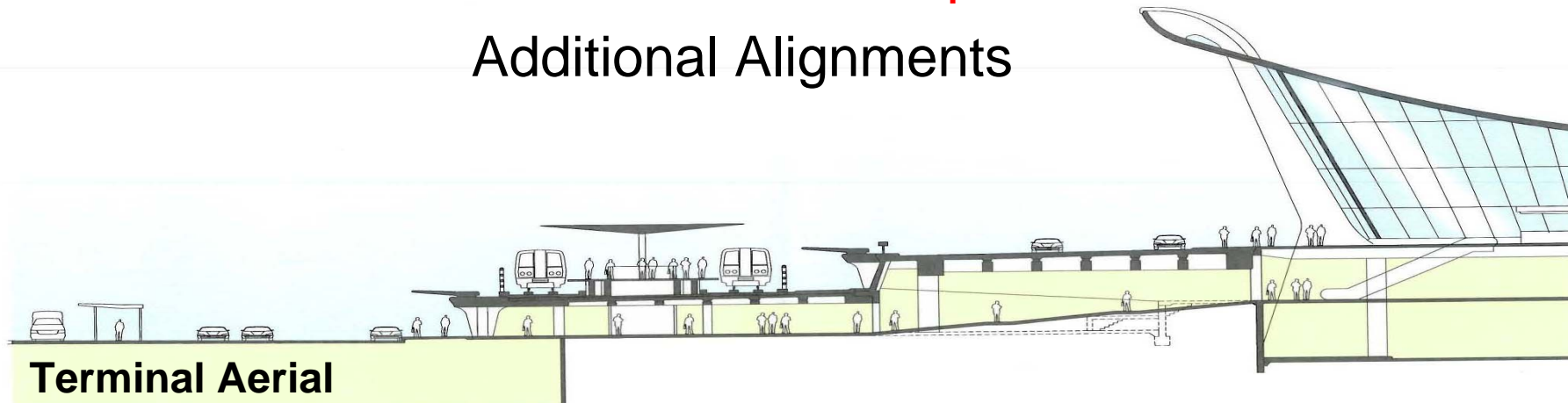




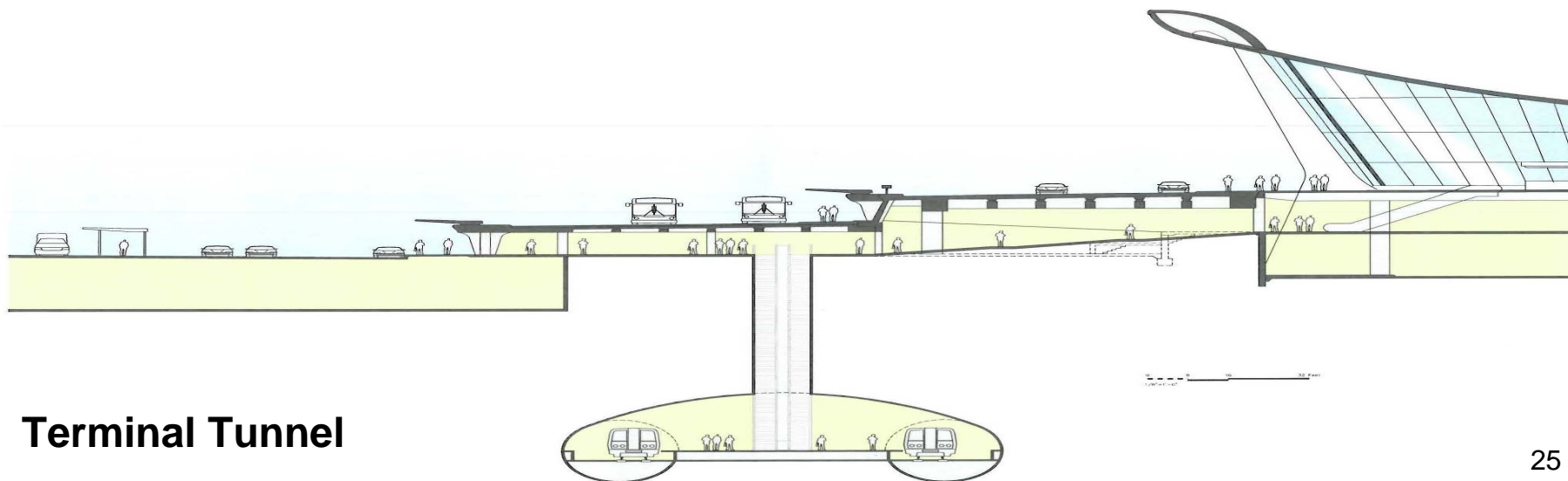
METROPOLITAN WASHINGTON AIRPORTS AUTHORITY

Dulles International Airport Station

Additional Alignments



Terminal Aerial



Terminal Tunnel



Dulles Corridor Metrorail Project Estimated Cost (\$ Millions)

	PHASE 1	PHASE 2	TOTAL
GUIDEWAY, TUNNEL, TRACK	\$666	\$1,126	\$1,792
STATIONS AND PARKING	317	725	1,042
YARD AND SHOP	52	262	314
SITE WORK AND UTILITIES	233	221	454
TRAIN SYSTEMS	278	272	550
RIGHT-OF-WAY & PROPERTY ACQUISITION	46	37	83
RAIL CARS	212	229	441
DESIGN AND ENGINEERING SERVICES	698	780	1,478
CONTINGENCY FUNDS	130	178	308
ROADWAY IMPROVEMENTS	123	-	123
TOTAL PROJECT COST	\$2,755	\$3,830*	\$6,585

*Preliminary cost estimate includes two-mile tunnel with underground station at Dulles International Airport. The Airports Authority is considering alternative alignments and station locations, and other cost reductions for Phase 2.



Ronald Reagan Washington National Airport



Dulles Corridor Metrorail Project



Dulles Toll Road



Washington Dulles International Airport



METROPOLITAN WASHINGTON
AIRPORTS AUTHORITY