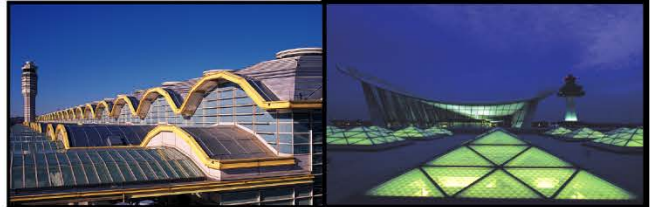


October
2014

Air Traffic Statistics



METROPOLITAN WASHINGTON AIRPORTS AUTHORITY

Metropolitan Washington Airports Authority

Air Traffic Statistics

Table of Contents

Summary

Air Traffic Summary	1
SH&E Air Traffic Schedule Activity.....	3
Passenger Trends.....	5
Total Passengers 4-Year Comparison - DCA, IAD, BWI.....	6
Total Commercial Passenger Enplanements.....	7
Market Share and Percentage of Top Airlines - DCA, IAD, BWI.....	9

Air Traffic Statistics - DCA

Monthly Air Traffic Summary – Current Month.....	10
Monthly Air Traffic Summary – Year-to-Date	12
Monthly Air Traffic Summary – Last 12 Months	14

Air Traffic Statistics - IAD

Monthly Air Traffic Summary – Current Month.....	16
Monthly Air Traffic Summary – Year-to-Date	18
Monthly Air Traffic Summary – Last 12 Months	20

Air Traffic Summary October 2014

Passenger Activity (in Millions)

		Current Month			Year-to-Date			Last 12 Months		
		DCA	IAD	System	DCA	IAD	System	DCA	IAD	System
Commercial Total	Passengers	1.9	1.9	3.8	17.4	18.2	35.6	20.6	21.6	42.2
	% Change	9.3%	2.1%	5.6%	1.0%	(1.7%)	(0.4%)	0.7%	(1.9%)	(0.6%)
Dom	Passengers	1.9	1.3	3.2	17.0	12.0	29.0	20.2	14.3	34.5
	% Change	9.5%	4.1%	7.2%	1.1%	(3.8%)	(1.0%)	0.8%	(4.0%)	(1.3%)
Int'l	Passengers	< 0.1	0.6	0.6	0.3	6.1	6.4	0.4	7.1	7.5
	% Change	(1.1%)	(2.5%)	(2.4%)	(1.9%)	2.5%	2.3%	(2.3%)	2.5%	2.3%

Note: System totals may not sum due to rounding.

U.S. industry average passenger enplanements as reported by Airlines for America (A4A):

Enplanements	Current Month	Year-to-Date
System	4.1%	2.7%
Domestic	4.8%	2.6%
International	(0.5%)	3.2%

Ronald Reagan Washington National Airport

- Domestic commercial passenger activity increased 9.5% in October 2014. Significant activity by carrier follows:

Airline	Comments
American + US Airways	<ul style="list-style-type: none"> 0.2% decrease in passenger activity Increased service to Boston in March 2014; Hartford, Los Angeles, and St. Louis in June 2014; and Columbus, Indianapolis, and Providence in September 2014 Reduced and discontinued service to a number of destinations in June and July 2014 in accordance with planned reductions in slot usage as a result of the merger
Southwest + AirTran	<ul style="list-style-type: none"> 112.9% increase in passenger activity as slots divested by American were taken over by Southwest New service to Kansas City in March 2014; Chicago Midway, Nashville, and New Orleans in August 2014; and Dallas-Love and Tampa in October 2014
Delta	<ul style="list-style-type: none"> 15.4% increase in passenger activity Reduced service to Memphis in January 2014 New service to Madison and Omaha in February 2014
JetBlue	<ul style="list-style-type: none"> 28.8% increase in passenger activity as JetBlue began utilizing slots divested by American New service to Charleston and Hartford in June 2014 Increased service to Tampa in July 2014

- Transborder passenger traffic decreased 1.1% in October as a result of cancelled service to Montreal on American + US Airways in June 2014.
- The combined American + US Airways operations, including its regional affiliates, had the largest commercial passenger market share with 53.2%, a decrease compared to 58.6% in October 2013.

Washington Dulles International Airport

Domestic Passenger Activity

- Domestic commercial passenger activity increased 4.1% in October 2014. Significant activity by carrier follows:

Airline	Comments
United	<ul style="list-style-type: none">• 1.9% decrease in passenger activity• Discontinued service to Salt Lake City in December 2013; Albuquerque in April 2014; Ft. Lauderdale in May 2014; Binghamton in June 2014; and Miami and Colorado Springs in September 2014• Reduced service to St. Louis, Grand Rapids, and Hunstville in June 2014; Cincinnati in July 2014; Cleveland in September 2014; and New York JFK in October 2014• Increased service to Columbia in January 2014; Burlington, San Antonio, and Syracuse in March 2014; Albany in April 2014; and Greensboro and Raleigh in October 2014
Frontier	<ul style="list-style-type: none">• New service to Atlanta, Charlotte, Minneapolis, Orlando, and Tampa in August 2014; Chicago O'Hare, Cincinnati, Detroit, Ft. Lauderdale, Fort Myers, Las Vegas, Memphis, St. Augustine, St. Louis in September 2014; and Cleveland in October 2014

International Passenger Activity

- October 2014 international commercial passenger traffic decreased 2.5%. Significant activity by carrier follows:

Airline	Comments
United	<ul style="list-style-type: none">• 12.3% decrease in passenger activity• Reduced service to London and Montreal in November 2013• Discontinued service to Quebec in November 2013 and San Salvador in April 2014
TACA + Avianca	<ul style="list-style-type: none">• 14.1% increase in passenger activity• Increased service to San Salvador in March 2014
Austrian	<ul style="list-style-type: none">• 38.6% increase in passenger activity due to aircraft upgauging in July 2014
Air China	<ul style="list-style-type: none">• New Service to Beijing began June 2014

- United Airlines, including its regional affiliates, had the largest commercial passenger market share of 63.2%, a decrease compared to 67.2% in October 2013.

Cargo Activity

- For the month of October 2014, total cargo increased 5.9% at Dulles from a year earlier. Domestic cargo increased 1.6% with increases on United (6.5%) and FedEx (0.4%).
- International cargo increased 8.3% due to increases on United (10.2%), All Nippon (28.0%), Korean Air (64.1%), and Qatar Amiri Air (25.2%), as well as new service by Air China.

Baltimore-Washington International Airport

- Current month commercial passenger activity vs. October 2013 increased 0.4%.
- BWI passenger activity outpaced activity at Dulles by 53.2k commercial passengers (2.8%) and National by 24.4k passengers (1.3%).
- Southwest continues to have the largest passenger market share with 70.9%, up from 70.0% in October 2013.
- Cargo activity at BWI totaled 9.7k metric tonnes, a 1.4% increase from a year earlier. Activity on BWI's largest cargo carrier, FedEx, declined 5.8% from October 2013.

Ronald Reagan Washington National Airport
 Air Traffic Schedule Activity
 October 2014 vs. October 2013

October 2014:	Daily Departures	Airlines*	Unduplicated Destinations
Domestic			
Passenger service information -			
Mainline	194	9	--
Regional Affiliate	<u>191</u>	<u>10</u>	--
Domestic Total	385	19	81
Transborder/International			
Passenger service information -			
Mainline	1	1	--
Regional Affiliate	<u>10</u>	<u>3</u>	--
Transborder/International Total	11	4	4

October 2013:	Daily Departures	Airlines*	Unduplicated Destinations
Domestic			
Passenger service information -			
Mainline	172	9	--
Regional Affiliate	<u>221</u>	<u>9</u>	--
Domestic Total	393	18	85
Transborder/International			
Passenger service information -			
Mainline	0	0	--
Regional Affiliate	<u>13</u>	<u>4</u>	--
Transborder/International Total	13	4	4

* The following airlines are counted as one airline:
 Southwest and AirTran
 American and US Airways
 Regional carriers flying for multiple mainline carriers

Source: DIIO, November 24, 2014

Washington Dulles International Airport

Air Traffic Schedule Activity

October 2014 vs. October 2013

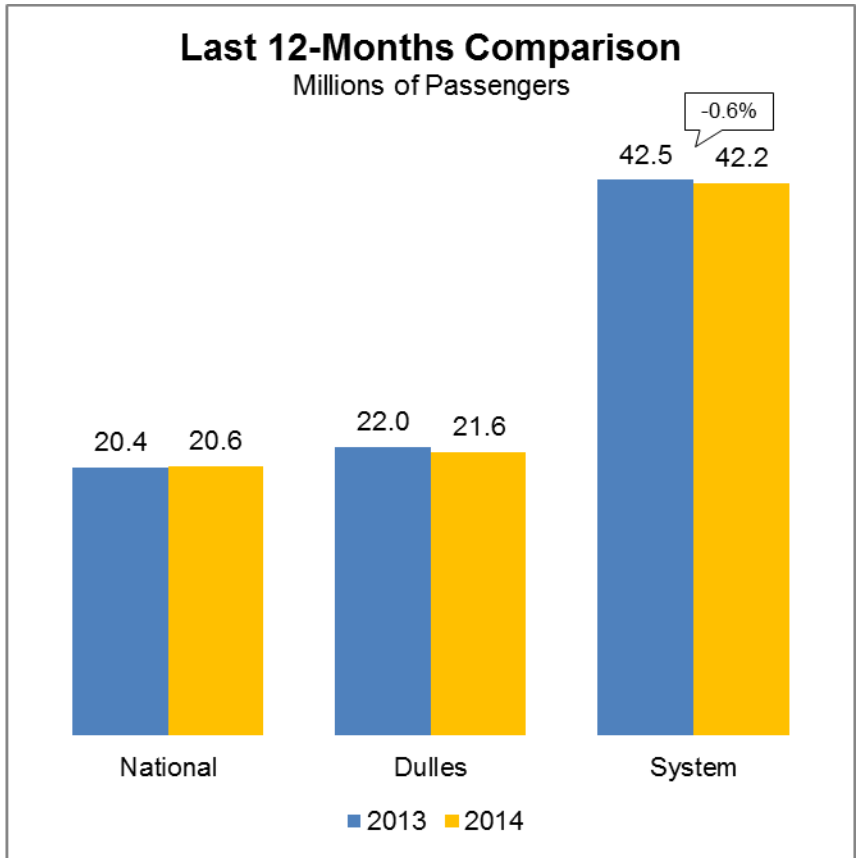
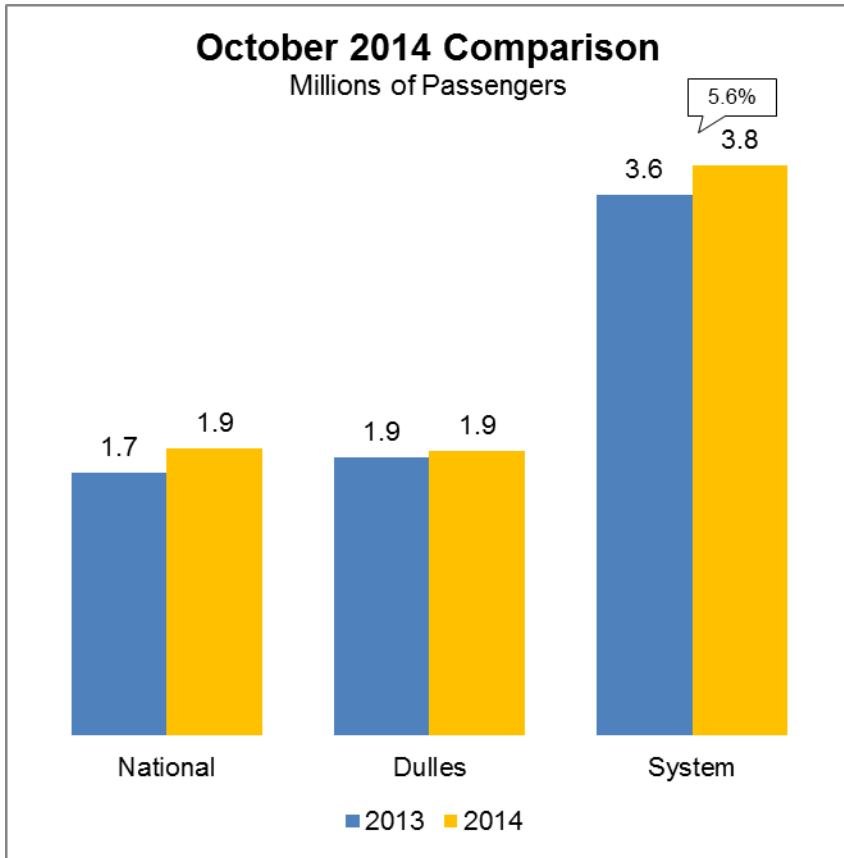
October 2014:	Daily Departures	Airlines*	Unduplicated Destinations
Domestic			
Passenger service information -			
Mainline	106	9	--
Regional Affiliate	<u>188</u>	<u>11</u>	--
Domestic Total	294	20	85
Transborder/International			
Passenger service information -			
Mainline	50	24	--
Regional Affiliate	<u>12</u>	<u>4</u>	--
Transborder/International Total	62	28	41

October 2013:	Daily Departures	Airlines	Unduplicated Destinations
Domestic			
Passenger service information -			
Mainline	106	7	--
Regional Affiliate	<u>195</u>	<u>13</u>	--
Domestic Total	301	20	83
Transborder/International			
Passenger service information -			
Mainline	50	23	--
Regional Affiliate	<u>15</u>	<u>5</u>	--
Transborder/International Total	65	28	39

* The following airlines are counted as one airline:
 Pacific Wings and Sun Air International
 Avianca and TACA
 American Airlines and US Airways
 Austrian and Tyrolean
 Regional carriers flying for multiple mainline carriers

Source: DIIO, November 24, 2014

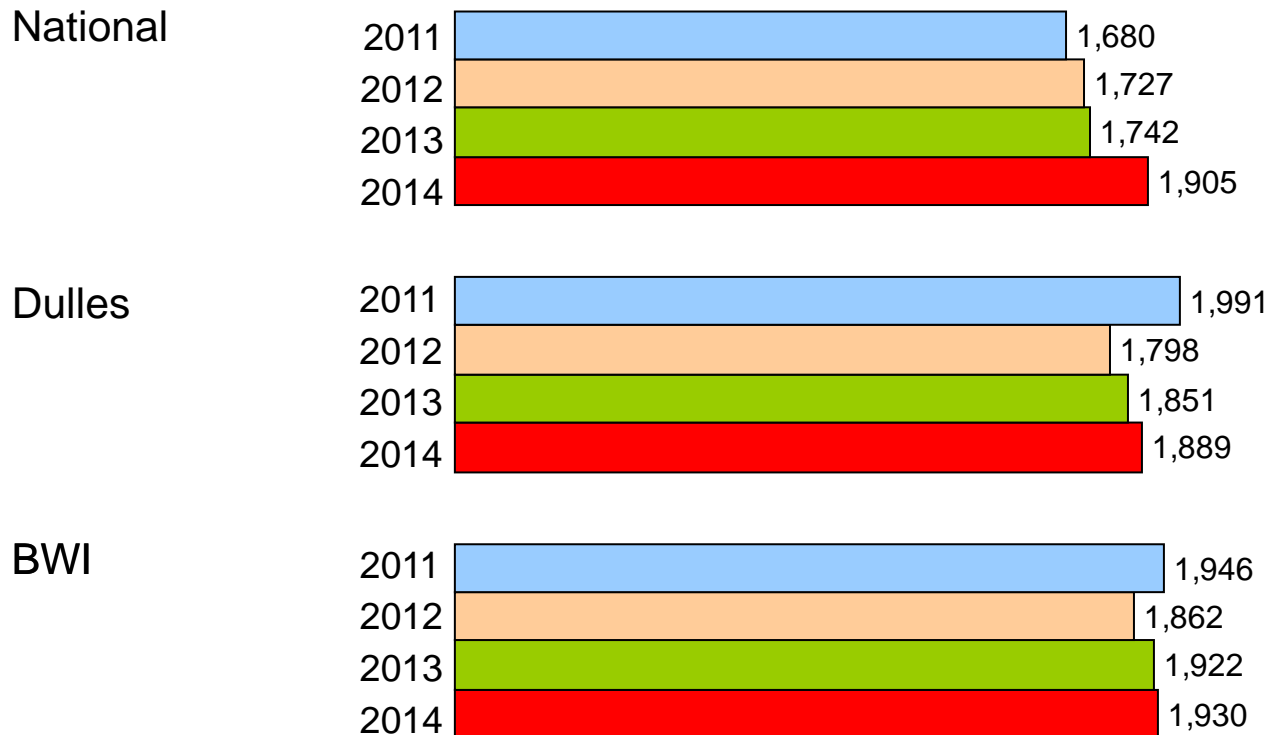
Passenger Trends



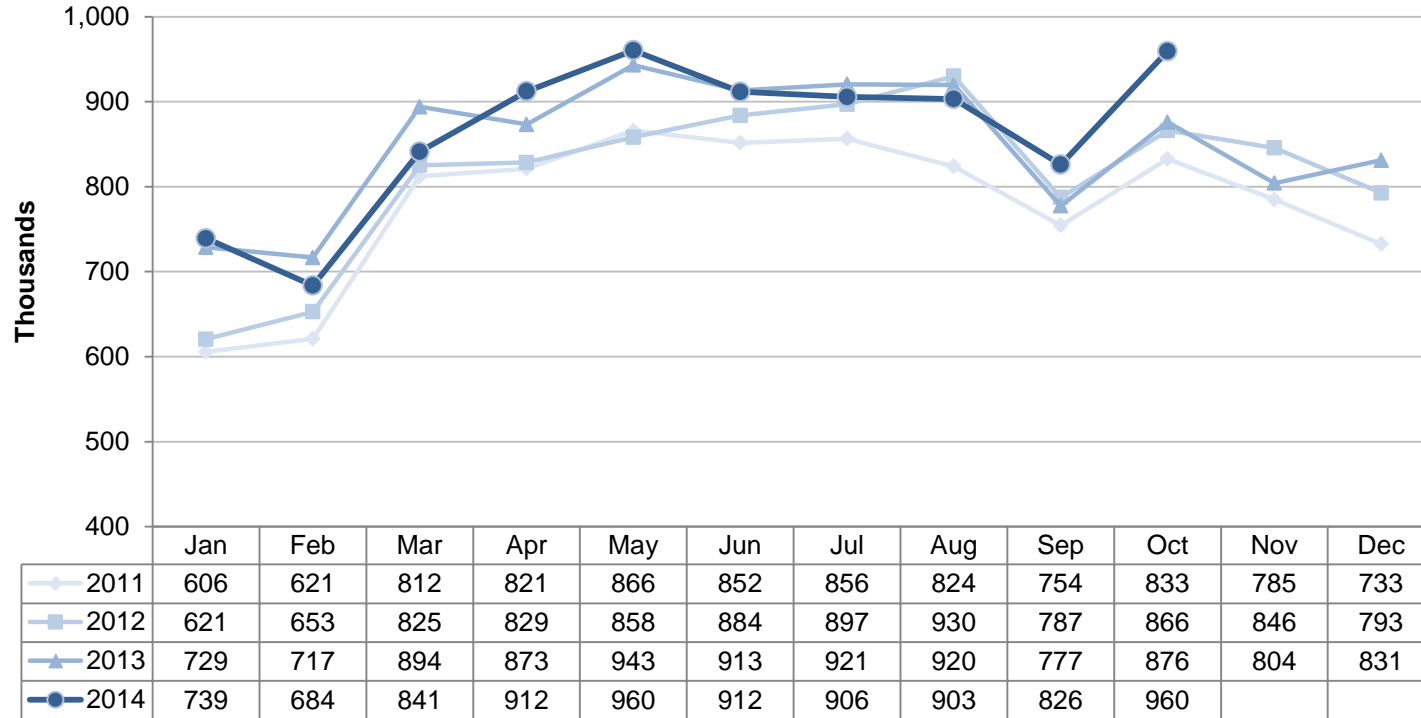
* System totals may not sum due to rounding.

Total Passengers

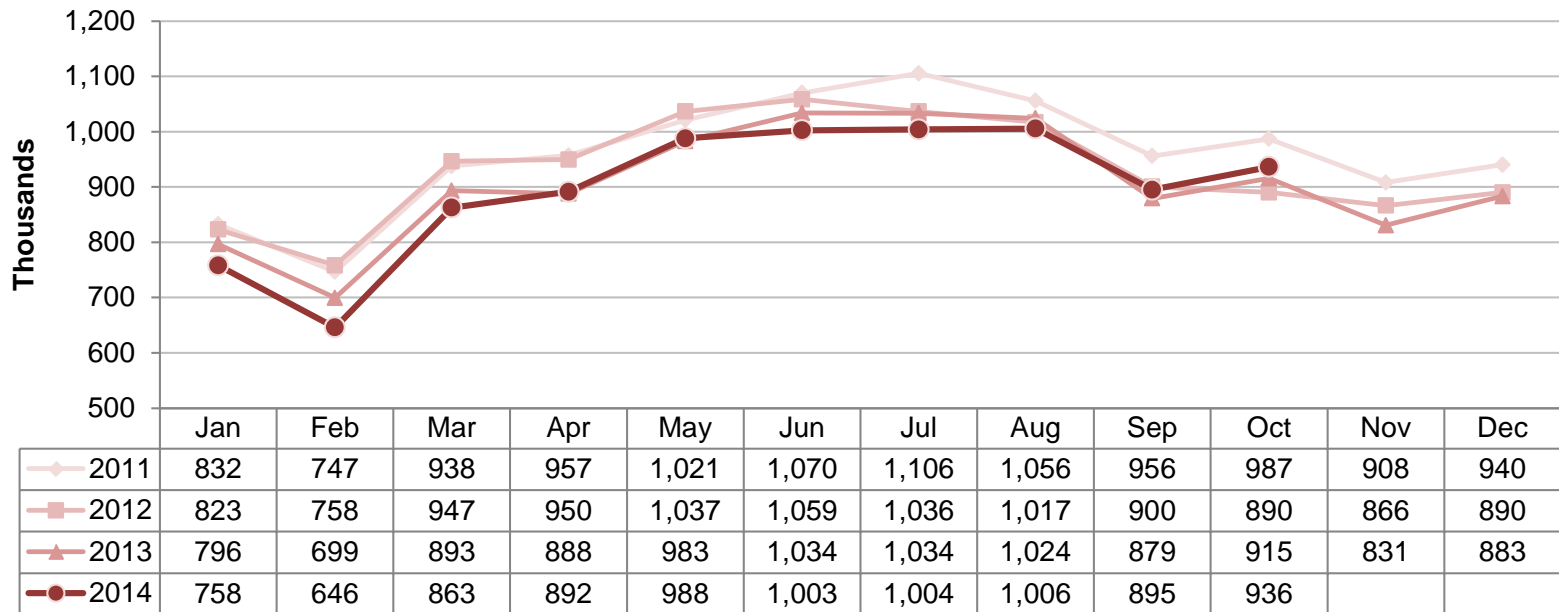
Four Year Comparison of the Month of October (Thousands)



Ronald Reagan Washington National Airport
 Total Commercial Passenger Enplanements
 Calendar Years 2011 - 2014



Dulles International Airport
Total Commercial Passenger Enplanements
Calendar Years 2011 - 2014



**Commercial Passenger Market Share and Percent Change of Top Airlines
in the Washington and Baltimore Region**

October 2014

	October 2014		October 2013	
	Percent Change	Passengers	Passengers	Market Share
National				
Top Airlines*				
1. American + US Airways	-0.7%	1,011,603	1,018,744	53.2%
2. Delta	15.4%	287,382	248,933	15.1%
3. Southwest + Airtran	112.9%	194,474	162,617	10.2%
4. United	0.2%	162,907	105,749	8.6%
5. JetBlue	28.8%	136,196	91,333	7.2%
6. Alaska	11.2%	37,168	40,821	2.0%
7. Frontier	-37.5%	25,515	33,434	1.3%
8. Air Canada	2.8%	21,138	20,554	1.1%
9. Virgin America	108.6%	15,364	10,394	0.8%
10. Sun Country	-3.2%	10,058	7,364	0.5%
Total Commercial Passengers	9.3%	1,901,805	1,739,943	100.0%

October 2013

	October 2014		October 2013	
	Percent Change	Passengers	Passengers	Market Share
Dulles				
Top Airlines*				
1. United	-4.0%	1,183,482	1,233,069	67.2%
2. American + US Airways	6.7%	87,578	82,103	4.7%
3. Frontier	N/A	84,205	76,323	4.5%
4. Delta	3.1%	78,662	51,419	4.2%
5. Southwest	-19.7%	41,298	38,281	2.2%
6. British Airways	2.3%	36,916	36,084	2.0%
7. Lufthansa	1.8%	36,458	35,826	2.0%
8. Virgin America	2.7%	30,418	29,623	1.6%
9. Air France	3.5%	30,095	29,085	1.6%
10. JetBlue	-31.1%	26,363	21,477	1.4%
11. All Other Airlines	17.6%	237,507	201,989	12.7%
Total Commercial Passengers	2.1%	1,872,982	1,835,279	100.0%

	October 2014		October 2013	
	Percent Change	Passengers	Passengers	Market Share
Baltimore				
Top Airlines*				
1. Southwest + Airtran	1.8%	1,365,848	1,342,042	70.9%
2. Delta	-5.9%	172,893	183,681	9.0%
3. American + US Airways	-2.0%	178,337	181,964	9.3%
4. United + Continental	-25.5%	84,932	114,036	4.4%
5. Spirit	45.1%	54,831	37,776	2.8%
6. JetBlue	3.9%	27,860	26,822	1.4%
7. British Airways	1.7%	10,488	10,312	0.5%
8. All Other Airlines	46.6%	31,011	21,157	1.6%
Total Commercial Passengers	0.4%	1,926,200	1,917,790	100.0%

	October 2014		October 2013	
	Percent Change	Passengers	Passengers	Market Share
Baltimore				
Top Airlines*				
1. Southwest + Airtran	1.8%	1,365,848	1,342,042	70.9%
2. Delta	-5.9%	172,893	183,681	9.0%
3. American + US Airways	-2.0%	178,337	181,964	9.3%
4. United + Continental	-25.5%	84,932	114,036	4.4%
5. Spirit	45.1%	54,831	37,776	2.8%
6. JetBlue	3.9%	27,860	26,822	1.4%
7. British Airways	1.7%	10,488	10,312	0.5%
8. All Other Airlines	46.6%	31,011	21,157	1.1%
Total Commercial Passengers	0.4%	1,926,200	1,917,790	100.0%

* Includes affiliated regional carriers

Commercial Passenger Market Share Summary

	Oct 2014	Oct 2013	Change
Total Passengers			
National	33.4%	31.7%	1.7%
Dulles	32.9%	33.4%	-0.6%
Baltimore	33.8%	34.9%	-1.1%
Domestic Passengers			
National	38.0%	36.7%	1.3%
Dulles	26.6%	27.1%	-0.4%
Baltimore	35.4%	36.3%	-0.9%
International Passengers			
National	4.8%	4.8%	0.0%
Dulles	85.1%	85.8%	-0.8%
Baltimore	10.2%	9.4%	0.7%

Totals may not sum due to rounding.

Metropolitan Washington Airports Authority
Ronald Reagan Washington National Airport
Monthly Air Traffic Summary Report
October 2014

Description	Enplaned	Deplaned	Total	Year Ago	% Change
Aircraft Operations					
Commercial:					
Air Carrier:					
Domestic			11,970	10,672	12.2
International			62	0	100.0
Transborder			0	0	0.0
Total - Air Carrier			12,032	10,672	12.7
Regional:					
Domestic			11,714	13,573	- 13.7
International			0	10	- 100.0
Transborder			643	760	- 15.4
Total - Regional			12,357	14,343	- 13.8
Commercial:					
Domestic			23,684	24,245	- 2.3
Transborder			705	770	- 8.4
Total - Commercial			24,389	25,015	- 2.5
Non-Commercial:					
General Aviation			305	401	- 23.9
Military			310	228	36.0
Total - Non-Commercial			615	629	- 2.2
Grand Total - Aircraft Operations			25,004	25,644	- 2.5
Passengers					
Commercial:					
Air Carrier Domestic:					
Scheduled	658,097	642,601	1,300,698	1,123,357	15.8
Chartered	0	0	0	0	0.0
Total - Domestic Air Carrier	658,097	642,601	1,300,698	1,123,357	15.8
Air Carrier International:					
Scheduled	1,927	1,823	3,750	0	100.0
Chartered	0	0	0	0	0.0
Total - International Air Carrier	1,927	1,823	3,750	0	100.0
Air Carrier Transborder:					
Scheduled	0	0	0	0	0.0
Chartered	0	0	0	0	0.0
Total - Transborder Air Carrier	0	0	0	0	0.0
Total - Air Carrier	660,024	644,424	1,304,448	1,123,357	16.1
Regional:					
Domestic	285,913	283,738	569,651	584,774	- 2.6
International	0	0	0	329	- 100.0
Transborder	13,676	14,030	27,706	31,483	- 12.0
Total - Regional	299,589	297,768	597,357	616,586	- 3.1
Commercial:					
Domestic	944,010	926,339	1,870,349	1,708,131	9.5
Transborder	15,603	15,853	31,456	31,812	- 1.1
Total - Commercial	959,613	942,192	1,901,805	1,739,943	9.3
Non-Commercial:					
General Aviation	1,366	1,305	2,671	1,760	51.8
Military	348	352	700	645	8.5
Total - Non-Commercial	1,714	1,657	3,371	2,405	40.2
Grand Total - Passengers	961,327	943,849	1,905,176	1,742,348	9.3

**Metropolitan Washington Airports Authority
Ronald Reagan Washington National Airport
Monthly Air Traffic Summary Report
October 2014**

Description	Enplaned	Deplaned	Total	Year Ago	% Change
Cargo - Tonnes					
Mail:					
Domestic	24	1	25	0	17,646.0
International	0	0	0	0	0.0
Transborder	0	0	0	0	0.0
Total - Mail:	24	1	25	0	17,646.0
Freight + Express:					
Domestic	90	59	149	118	26.4
International	0	0	0	0	0.0
Transborder	0	0	0	0	- 100.0
Total - Freight + Express:	90	59	149	118	26.3
Mail Plus Freight + Express:					
Domestic	114	60	174	118	47.4
Transborder	0	0	0	0	- 100.0
Grand Total - Cargo	114	60	174	118	47.2

NOTE: Figures may not sum to total due to rounding.

Metropolitan Washington Airports Authority
Ronald Reagan Washington National Airport
Monthly Air Traffic Summary Report
January 2014 - October 2014

Description	Enplaned	Deplaned	Total	Year Ago	% Change
Aircraft Operations					
Commercial:					
Air Carrier:					
Domestic			102,731	104,462	- 1.7
International			574	310	85.2
Transborder			0	1,108	- 100.0
Total - Air Carrier			103,305	105,880	- 2.4
Regional:					
Domestic			120,077	127,751	- 6.0
International			162	337	- 51.9
Transborder			6,735	6,602	2.0
Total - Regional			126,974	134,690	- 5.7
Commercial:					
Domestic			222,808	232,213	- 4.1
Transborder			7,471	8,357	- 10.6
Total - Commercial			230,279	240,570	- 4.3
Non-Commercial:					
General Aviation			3,242	4,230	- 23.4
Military			2,356	2,029	16.1
Total - Non-Commercial			5,598	6,259	- 10.6
Grand Total - Aircraft Operations			235,877	246,829	- 4.4
Passengers					
Commercial:					
Air Carrier Domestic:					
Scheduled	5,700,607	5,732,913	11,433,520	11,329,440	0.9
Chartered	0	0	0	0	0.0
Total - Domestic Air Carrier	5,700,607	5,732,913	11,433,520	11,329,440	0.9
Air Carrier International:					
Scheduled	24,380	24,042	48,422	28,779	68.3
Chartered	0	0	0	0	0.0
Total - International Air Carrier	24,380	24,042	48,422	28,779	68.3
Air Carrier Transborder:					
Scheduled	0	0	0	51,788	- 100.0
Chartered	0	0	0	0	0.0
Total - Transborder Air Carrier	0	0	0	51,788	- 100.0
Total - Air Carrier	5,724,987	5,756,955	11,481,942	11,410,007	0.6
Regional:					
Domestic	2,771,469	2,794,208	5,565,677	5,492,962	1.3
International	4,877	4,766	9,643	21,297	- 54.7
Transborder	141,861	137,475	279,336	242,020	15.4
Total - Regional	2,918,207	2,936,449	5,854,656	5,756,279	1.7
Commercial:					
Domestic	8,472,076	8,527,121	16,999,197	16,822,402	1.1
Transborder	171,118	166,283	337,401	343,884	- 1.9
Total - Commercial	8,643,194	8,693,404	17,336,598	17,166,286	1.0
Non-Commercial:					
General Aviation	7,905	7,708	15,613	12,778	22.2
Military	3,044	2,964	6,008	6,488	- 7.4
Total - Non-Commercial	10,949	10,672	21,621	19,266	12.2
Grand Total - Passengers	8,654,143	8,704,076	17,358,219	17,185,552	1.0

Metropolitan Washington Airports Authority
Ronald Reagan Washington National Airport
Monthly Air Traffic Summary Report
January 2014 - October 2014

Description	Enplaned	Deplaned	Total	Year Ago	% Change
Cargo - Tonnes					
Mail:					
Domestic	261	29	290	14	1,972.9
International	0	0	0	0	0.0
Transborder	0	0	0	0	0.0
Total - Mail:	261	29	290	14	1,972.9
Freight + Express:					
Domestic	852	625	1,477	1,598	- 7.5
International	0	0	0	0	- 100.0
Transborder	0	0	1	1	- 33.6
Total - Freight + Express:	853	625	1,478	1,599	- 7.6
Mail Plus Freight + Express:					
Domestic	1,113	654	1,768	1,612	9.7
Transborder	0	0	1	1	- 38.8
Grand Total - Cargo	1,114	655	1,768	1,613	9.6

NOTE: Figures may not sum to total due to rounding.

Metropolitan Washington Airports Authority
Ronald Reagan Washington National Airport
Monthly Air Traffic Summary Report
November 2013 - October 2014

Description	Enplaned	Deplaned	Total	Year Ago	% Change
Aircraft Operations					
Commercial:					
Air Carrier:					
Domestic			121,469	124,543	- 2.5
International			598	334	79.0
Transborder			0	1,542	- 100.0
Total - Air Carrier			122,067	126,419	- 3.4
Regional:					
Domestic			144,524	152,129	- 5.0
International			231	399	- 42.1
Transborder			8,125	7,939	2.3
Total - Regional			152,880	160,467	- 4.7
Commercial:					
Domestic			265,993	276,672	- 3.9
Transborder			8,954	10,214	- 12.3
Total - Commercial			274,947	286,886	- 4.2
Non-Commercial:					
General Aviation			4,069	5,353	- 24.0
Military			2,680	2,225	20.4
Total - Non-Commercial			6,749	7,578	- 10.9
Grand Total - Aircraft Operations			281,696	294,464	- 4.3
Passengers					
Commercial:					
Air Carrier Domestic:					
Scheduled	6,769,698	6,765,344	13,535,042	13,468,327	0.5
Chartered	0	0	0	0	0.0
Total - Domestic Air Carrier	6,769,698	6,765,344	13,535,042	13,468,327	0.5
Air Carrier International:					
Scheduled	25,911	24,911	50,822	31,137	63.2
Chartered	0	0	0	0	0.0
Total - International Air Carrier	25,911	24,911	50,822	31,137	63.2
Air Carrier Transborder:					
Scheduled	0	0	0	71,399	- 100.0
Chartered	0	0	0	0	0.0
Total - Transborder Air Carrier	0	0	0	71,399	- 100.0
Total - Air Carrier	6,795,609	6,790,255	13,585,864	13,570,863	0.1
Regional:					
Domestic	3,308,667	3,322,987	6,631,654	6,544,247	1.3
International	6,755	6,634	13,389	24,707	- 45.8
Transborder	167,469	164,607	332,076	278,457	19.3
Total - Regional	3,482,891	3,494,228	6,977,119	6,847,411	1.9
Commercial:					
Domestic	10,078,365	10,088,331	20,166,696	20,012,574	0.8
Transborder	200,135	196,152	396,287	405,700	- 2.3
Total - Commercial	10,278,500	10,284,483	20,562,983	20,418,274	0.7
Non-Commercial:					
General Aviation	8,995	8,790	17,785	15,367	15.7
Military	3,540	3,444	6,984	7,912	- 11.7
Total - Non-Commercial	12,535	12,234	24,769	23,279	6.4
Grand Total - Passengers	10,291,035	10,296,717	20,587,752	20,441,553	0.7

Metropolitan Washington Airports Authority
Ronald Reagan Washington National Airport
Monthly Air Traffic Summary Report
November 2013 - October 2014

Description	Enplaned	Deplaned	Total	Year Ago	% Change
Cargo - Tonnes					
Mail:					
Domestic	286	46	332	14	2,257.3
International	0	0	0	0	0.0
Transborder	0	0	0	0	0.0
Total - Mail:	286	46	332	14	2,257.3
Freight + Express:					
Domestic	1,008	716	1,725	2,588	- 33.4
International	0	0	0	0	- 100.0
Transborder	1	1	1	2	- 18.2
Total - Freight + Express:	1,009	717	1,726	2,590	- 33.4
Mail Plus Freight + Express:					
Domestic	1,294	762	2,057	2,602	- 21.0
Transborder	1	1	1	2	- 23.3
Grand Total - Cargo	1,295	763	2,058	2,604	- 21.0

NOTE: Figures may not sum to total due to rounding.

Metropolitan Washington Airports Authority
Washington Dulles International Airport
Monthly Air Traffic Summary Report
October 2014

Description	Enplaned	Deplaned	Total	Year Ago	% Change
Aircraft Operations					
Commercial:					
Air Carrier:					
Domestic			6,499	6,494	0.1
International			2,950	3,003	- 1.8
Transborder			0	0	0.0
Total - Air Carrier			9,449	9,497	- 0.5
Regional:					
Domestic			12,476	12,693	- 1.7
International			0	80	- 100.0
Transborder			502	977	- 48.6
Total - Regional			12,978	13,750	- 5.6
Commercial:					
Domestic			18,975	19,187	- 1.1
International			3,452	4,060	- 15.0
Total - Commercial			22,427	23,247	- 3.5
Non-Commercial:					
General Aviation			3,734	4,160	- 10.2
Military			25	92	- 72.8
Total - Non-Commercial			3,759	4,252	- 11.6
Grand Total - Aircraft Operations			26,186	27,499	- 4.8
Passengers					
Commercial:					
Air Carrier Domestic:					
Scheduled	391,565	392,241	783,806	751,348	4.3
Chartered	1,245	701	1,946	2,607	- 25.4
Total - Domestic Air Carrier	392,810	392,942	785,752	753,955	4.2
Air Carrier International:					
Scheduled	267,876	272,054	539,930	527,215	2.4
Chartered	453	505	958	1,020	- 6.1
Total - International Air Carrier	268,329	272,559	540,888	528,235	2.4
Air Carrier Transborder:					
Scheduled	0	0	0	0	0.0
Chartered	0	0	0	0	0.0
Total - Transborder Air Carrier	0	0	0	0	0.0
Total - Air Carrier	661,139	665,501	1,326,640	1,282,190	3.5
Regional:					
Domestic	265,689	261,172	526,861	506,875	3.9
International	0	0	0	3,618	- 100.0
Transborder	9,396	10,085	19,481	42,596	- 54.3
Total - Regional	275,085	271,257	546,342	553,089	- 1.2
Commercial:					
Domestic	658,499	654,114	1,312,613	1,260,830	4.1
International	277,725	282,644	560,369	574,449	- 2.5
Total - Commercial	936,224	936,758	1,872,982	1,835,279	2.1
Non-Commercial:					
General Aviation	8,208	7,452	15,660	15,187	3.1
Military	124	71	195	230	- 15.2
Total - Non-Commercial	8,332	7,523	15,855	15,417	2.8
Grand Total - Passengers	944,556	944,281	1,888,837	1,850,696	2.1

Metropolitan Washington Airports Authority
Washington Dulles International Airport
Monthly Air Traffic Summary Report
October 2014

Description	Enplaned	Deplaned	Total	Year Ago	% Change
Cargo - Tonnes					
Mail:					
Domestic	276	437	714	593	20.3
International	679	478	1,157	983	17.7
Total - Mail:	956	915	1,871	1,576	18.7
Freight + Express:					
Domestic	4,074	3,218	7,292	7,286	0.1
International	4,858	10,039	14,897	13,847	7.6
Total - Freight + Express:	8,932	13,257	22,189	21,133	5.0
Mail Plus Freight + Express:					
Domestic	4,350	3,656	8,006	7,880	1.6
International	5,537	10,517	16,054	14,830	8.3
Grand Total - Cargo	9,888	14,172	24,060	22,710	5.9

NOTE: Figures may not sum to total due to rounding.

Metropolitan Washington Airports Authority
Washington Dulles International Airport
Monthly Air Traffic Summary Report
January 2014 - October 2014

Description	Enplaned	Deplaned	Total	Year Ago	% Change
Aircraft Operations					
Commercial:					
Air Carrier:					
Domestic			57,991	62,052	- 6.5
International			30,399	30,261	0.5
Transborder			0	12	- 100.0
Total - Air Carrier			88,390	92,325	- 4.3
Regional:					
Domestic			114,521	121,957	- 6.1
International			360	80	350.0
Transborder			7,164	8,918	- 19.7
Total - Regional			122,045	130,955	- 6.8
Commercial:					
Domestic			172,512	184,009	- 6.2
International			37,923	39,271	- 3.4
Total - Commercial			210,435	223,280	- 5.8
Non-Commercial:					
General Aviation			33,150	34,810	- 4.8
Military			450	866	- 48.0
Total - Non-Commercial			33,600	35,676	- 5.8
Grand Total - Aircraft Operations			244,035	258,956	- 5.8
Passengers					
Commercial:					
Air Carrier Domestic:					
Scheduled	3,598,307	3,664,101	7,262,408	7,501,556	- 3.2
Chartered	6,348	6,161	12,509	17,333	- 27.8
Total - Domestic Air Carrier	3,604,655	3,670,262	7,274,917	7,518,889	- 3.2
Air Carrier International:					
Scheduled	2,822,649	2,889,157	5,711,806	5,536,931	3.2
Chartered	4,437	4,251	8,688	9,871	- 12.0
Total - International Air Carrier	2,827,086	2,893,408	5,720,494	5,546,802	3.1
Air Carrier Transborder:					
Scheduled	0	0	0	0	0.0
Chartered	0	0	0	473	- 100.0
Total - Transborder Air Carrier	0	0	0	473	- 100.0
Total - Air Carrier	6,431,741	6,563,670	12,995,411	13,066,164	- 0.5
Regional:					
Domestic	2,386,489	2,338,083	4,724,572	4,950,422	- 4.6
International	13,684	14,102	27,786	3,618	668.0
Transborder	157,612	172,310	329,922	378,888	- 12.9
Total - Regional	2,557,785	2,524,495	5,082,280	5,332,928	- 4.7
Commercial:					
Domestic	5,991,144	6,008,345	11,999,489	12,469,311	- 3.8
International	2,998,382	3,079,820	6,078,202	5,929,781	2.5
Total - Commercial	8,989,526	9,088,165	18,077,691	18,399,092	- 1.7
Non-Commercial:					
General Aviation	65,056	62,335	127,391	126,103	1.0
Military	287	302	589	1,133	- 48.0
Total - Non-Commercial	65,343	62,637	127,980	127,236	0.6
Grand Total - Passengers	9,054,869	9,150,802	18,205,671	18,526,328	- 1.7

Metropolitan Washington Airports Authority
Washington Dulles International Airport
Monthly Air Traffic Summary Report
January 2014 - October 2014

Description	Enplaned	Deplaned	Total	Year Ago	% Change
Cargo - Tonnes					
Mail:					
Domestic	2,028	3,725	5,752	4,447	29.4
International	2,610	862	3,471	5,840	- 40.6
Total - Mail:	4,637	4,586	9,224	10,287	- 10.3
Freight + Express:					
Domestic	36,980	30,660	67,640	74,579	- 9.3
International	55,425	89,449	144,873	123,915	16.9
Total - Freight + Express:	92,405	120,109	212,514	198,495	7.1
Mail Plus Freight + Express:					
Domestic	39,008	34,385	73,393	79,026	- 7.1
International	58,034	90,310	148,345	129,756	14.3
Grand Total - Cargo	97,042	124,695	221,737	208,782	6.2

NOTE: Figures may not sum to total due to rounding.

Metropolitan Washington Airports Authority
Washington Dulles International Airport
Monthly Air Traffic Summary Report
November 2013 - October 2014

Description	Enplaned	Deplaned	Total	Year Ago	% Change
Aircraft Operations					
Commercial:					
Air Carrier:					
Domestic			69,916	74,521	- 6.2
International			35,966	35,600	1.0
Transborder			1	13	- 92.3
Total - Air Carrier			105,883	110,134	- 3.9
Regional:					
Domestic			137,687	145,486	- 5.4
International			383	80	378.8
Transborder			8,801	10,595	- 16.9
Total - Regional			146,871	156,161	- 5.9
Commercial:					
Domestic			207,603	220,007	- 5.6
International			45,151	46,288	- 2.5
Total - Commercial			252,754	266,295	- 5.1
Non-Commercial:					
General Aviation			39,558	41,596	- 4.9
Military			568	995	- 42.9
Total - Non-Commercial			40,126	42,591	- 5.8
Grand Total - Aircraft Operations			292,880	308,886	- 5.2
Passengers					
Commercial:					
Air Carrier Domestic:					
Scheduled	4,299,350	4,367,601	8,666,951	8,990,450	- 3.6
Chartered	7,116	6,729	13,845	19,414	- 28.7
Total - Domestic Air Carrier	4,306,466	4,374,330	8,680,796	9,009,864	- 3.7
Air Carrier International:					
Scheduled	3,335,515	3,363,346	6,698,861	6,498,362	3.1
Chartered	5,254	5,244	10,498	12,049	- 12.9
Total - International Air Carrier	3,340,769	3,368,590	6,709,359	6,510,411	3.1
Air Carrier Transborder:					
Scheduled	0	0	0	0	0.0
Chartered	50	139	189	473	- 60.0
Total - Transborder Air Carrier	50	139	189	473	- 60.0
Total - Air Carrier	7,647,285	7,743,059	15,390,344	15,520,748	- 0.8
Regional:					
Domestic	2,852,588	2,808,870	5,661,458	5,923,968	- 4.4
International	14,001	14,943	28,944	3,618	700.0
Transborder	189,677	204,502	394,179	442,853	- 11.0
Total - Regional	3,056,266	3,028,315	6,084,581	6,370,439	- 4.5
Commercial:					
Domestic	7,159,054	7,183,200	14,342,254	14,933,832	- 4.0
International	3,544,497	3,588,174	7,132,671	6,957,355	2.5
Total - Commercial	10,703,551	10,771,374	21,474,925	21,891,187	- 1.9
Non-Commercial:					
General Aviation	76,686	74,188	150,874	150,066	0.5
Military	301	308	609	1,145	- 46.8
Total - Non-Commercial	76,987	74,496	151,483	151,211	0.2
Grand Total - Passengers	10,780,538	10,845,870	21,626,408	22,042,398	- 1.9

Metropolitan Washington Airports Authority
Washington Dulles International Airport
Monthly Air Traffic Summary Report
November 2013 - October 2014

Description	Enplaned	Deplaned	Total	Year Ago	% Change
Cargo - Tonnes					
Mail:					
Domestic	2,582	4,654	7,236	5,249	37.9
International	4,761	2,585	7,346	6,469	13.6
Total - Mail:	7,343	7,240	14,583	11,718	24.4
Freight + Express:					
Domestic	43,703	36,945	80,648	92,517	- 12.8
International	64,732	106,354	171,086	149,970	14.1
Total - Freight + Express:	108,434	143,300	251,734	242,486	3.8
Mail Plus Freight + Express:					
Domestic	46,285	41,600	87,885	97,765	- 10.1
International	69,493	108,939	178,432	156,439	14.1
Grand Total - Cargo	115,777	150,539	266,317	254,204	4.8

NOTE: Figures may not sum to total due to rounding.